



Reimagined, reborn and perfectly formed. Rediscover the

# TARGA 43 OPEN



Every. Perfect. Detail.





TARGA  
43 OPEN

INTRODUCTION

MAIN  
FEATURES

EXTERIOR  
DESIGN

INTERIOR  
DESIGN

PRINCIPLE  
DIMENSIONS

GENERAL  
ARRANGEMENTS

CELEBRATING  
50 YEARS

DEALERS

FAIRLINE  
YACHTS

# A fondly remembered icon returns, more beautiful than ever

Superyacht designer Alberto Mancini may have designed the Targa 43 OPEN using his unmistakable signature style...but he still captured the very essence that made its predecessor one of the most popular Fairline models ever built.

Svelte, sophisticated lines evoking that unmistakable Riviera-glamor, married with flawless engineering and unbridled performance.

Step aboard, and all that style and luxury persists, with a spacious cockpit...exactly what you'd would expect from a craft built for daily escapades to dazzling private beaches or secluded coves.





TARGA  
43 OPEN

INTRODUCTION

MAIN  
FEATURES

EXTERIOR  
DESIGN

INTERIOR  
DESIGN

PRINCIPLE  
DIMENSIONS

GENERAL  
ARRANGEMENTS

CELEBRATING  
50 YEARS

DEALERS

FAIRLINE  
YACHTS

## An old favourite, new features

Despite its low profile, the Targa 43 OPEN more than manages to fit a magnificent bank of innovative features, including:

- **2 cabin / 2 heads**
- **Hardtop with electric sliding canvas roof**
- **Large forward and aft sun beds**
- **Garage for Williams 280 MiniJet**
- **Seakeeper NG5 gyroscopic stabiliser (optional)**
- **Power and maneuverability with:**
  - 2 x Volvo Penta IPS600 D6-435, diesel (435mhp each) with an estimated maximum speed of 34 knots





A stylish affair,  
from every angle

  
TARGA  
43 OPEN

INTRODUCTION

MAIN  
FEATURES

EXTERIOR  
DESIGN

INTERIOR  
DESIGN

PRINCIPLE  
DIMENSIONS

GENERAL  
ARRANGEMENTS

CELEBRATING  
50 YEARS

DEALERS

  
FAIRLINE  
YACHTS





  
TARGA  
43 OPEN

INTRODUCTION

MAIN  
FEATURES

**EXTERIOR  
DESIGN**

INTERIOR  
DESIGN

PRINCIPLE  
DIMENSIONS

GENERAL  
ARRANGEMENTS

CELEBRATING  
50 YEARS

DEALERS





  
TARGA  
43 OPEN

INTRODUCTION

MAIN  
FEATURES

EXTERIOR  
DESIGN

INTERIOR  
DESIGN

PRINCIPLE  
DIMENSIONS

GENERAL  
ARRANGEMENTS

CELEBRATING  
50 YEARS

DEALERS











# Beautifully finished inside and out

In the spirit of building the perfect yacht at every possible level, we have also carefully created four different interior design schemes for you to choose from:



## AMALFI

Inspired by Liguria's local architecture, this scheme exudes the sunny warmth synonymous with fragrant Italian lemon trees and the umbrella-lined shores of the Amalfi coast.



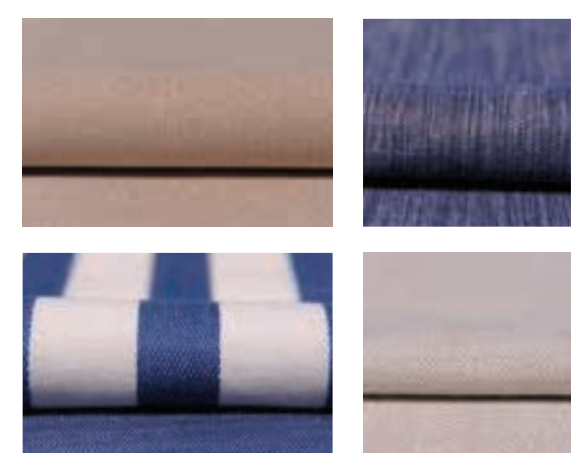
## CAPRI

Understated, earthy colours, effortlessly combined with rich natural textures. All the hallmarks of an interior design collection that is as gentle as the Mediterranean breeze.



## HAMPTONS

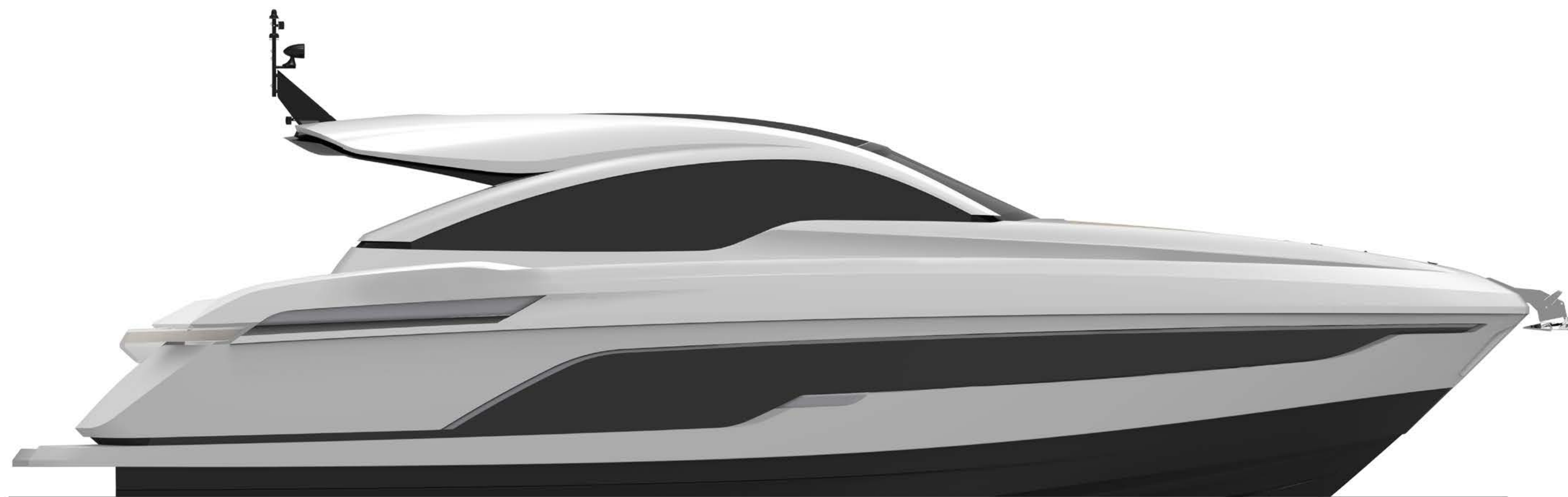
Evoking elegant vintage design cues, whilst offering a bold and contemporary interpretation of the luxury that was once the preserve of America's East Coast.



## ST. TROPEZ

An ode to the sea where all manner of deep, oceanic blues tastefully swirl with muted greys, delicate creams and classic nautical motifs.

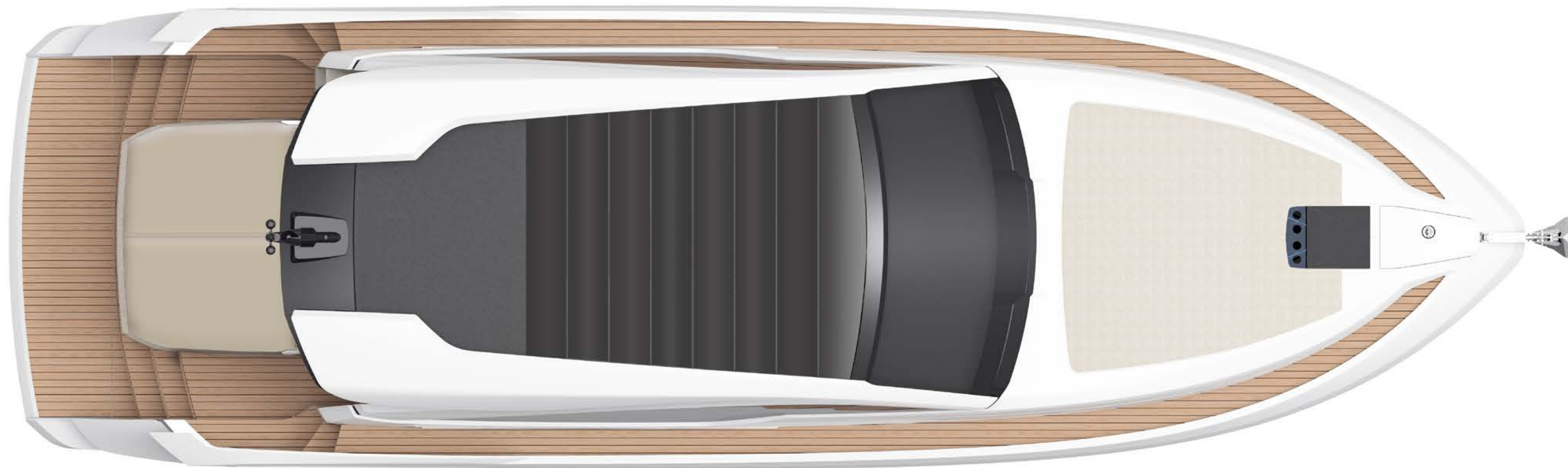




## Carefully considered proportions

- Length overall (excluding pulpit): 45'7" (13.9m)
- Length of hull: 42' (12.8m)
- Beam (inc. gunwale): 14'2" (4.32m)
- Number of berths: 4 – 5
- Draught: 3'10" (1.17m) unloaded
- Height above waterline (inc. arch & nav. light mast): 18'2" (5.55m)
- Transport height: 16' (4.87m)
- Fuel capacity: 286 gallons / 343 US gallons (1,300 litres)
- Water capacity (inc. calorifier): 88 gallons / 105 US gallons (400 litres)





Exterior Deck

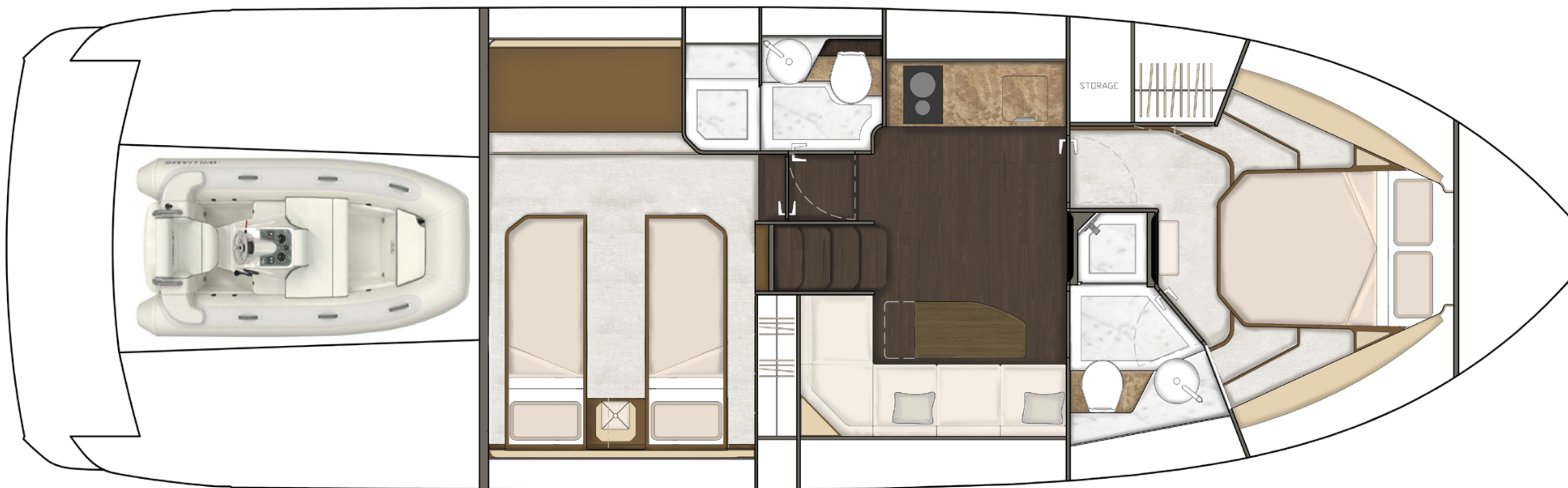


Main Deck

## Main Deck

From the graceful arch of the swept back roofline and elegant interior beneath, to the expansive sunbeds on the foredeck (and over the large garage), you can't but help fall deeply in love with such a masterful piece of design.





Master Cabin Forward



Mid-Master Cabin (option)

## Lower Deck

Below deck you are spoiled for choice with two different cabin configurations, which means you could either have the master cabin located forward or mid-ship. Relax in the elegantly furnished saloon alongside a fully-equipped galley fitted with all the latest designer appliances.



# Last year we celebrated our 50th anniversary

## It was truly a Year Of Golden Moments

It's not enough to build a beautiful boat just for the sake of it. Building the kind of yachts which we are proud to put the Fairline name to, requires something more than just engineering genius or craftsmanship. It also requires the desire to create extraordinary moments for whoever owns it. Moments of joy, exhilaration, excitement...and even tranquility.

With 2017 being our 50th Anniversary, we took every possible opportunity to celebrate those incredible, golden moments since the brand's founder Jack Newington first launched the famous Fairline 19. This included moments like winning the World Yacht Trophy for 2017, becoming a finalist for the Motor Boat of the Year 2018 and being nominated for the European Powerboat of the Year 2018!



INTRODUCTION

MAIN  
FEATURES

EXTERIOR  
DESIGN

INTERIOR  
DESIGN

PRINCIPLE  
DIMENSIONS

GENERAL  
ARRANGEMENTS

CELEBRATING  
50 YEARS

DEALERS



# An unrivalled dealership network

Just like the many parts that make up one of our extraordinary yachts, so too are international dealers handpicked and perfectly placed to cover anything and everything you could want from Fairline (you can visit [fairline.com](http://fairline.com) for details of your nearest dealer).

Fairline Argentina  
Fairline Benelux & W. Germany  
Fairline Brazil  
Fairline Channel Islands  
Fairline Chertsey  
Fairline Chesapeake  
Fairline Colombia  
Fairline Costa Blanca  
Fairline Côte d'Azur  
Fairline Croatia

Fairline Cyprus  
Fairline Denmark  
Fairline Eastbourne  
Fairline Florida  
Fairline Great Lakes  
Fairline Greece  
Fairline Hong Kong  
Fairline Ibiza  
Fairline India  
Fairline Israel

Fairline Italia  
Fairline Japan  
Fairline Korea  
Fairline Lebanon  
Fairline Malta  
Fairline Menorca  
Fairline Mexico  
Fairline Middle East  
Fairline Monaco  
Fairline New South Wales

Fairline New York  
Fairline New Zealand  
Fairline North Mallorca  
Fairline Poland  
Fairline Portugal  
Fairline Queensland  
Fairline Russia  
Fairline Singapore  
Fairline South Africa  
Fairline South China

Fairline South Mallorca  
Fairline Southampton  
Fairline Sverige  
Fairline Switzerland  
Fairline Thailand  
Fairline Torbay  
Fairline Turkey  
Fairline Ukraine  
Fairline Victoria  
Fairline Western Australia





# TARGA 43 OPEN